

QUIZ #1

Take this short quiz before the show!

1. What is an inference?

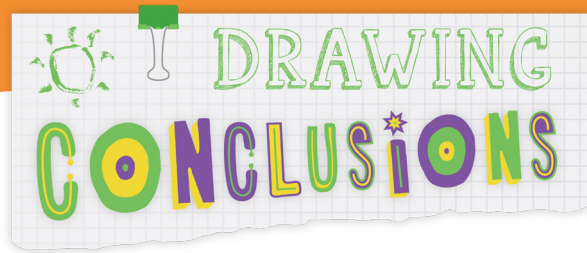
- A) An assumption made by the reader, based on evidence
- B) Something that interferes with reading
- C) A random guess about a story
- D) A detail the author told us directly

2. To make predictions about a story you're reading you'll probably have to:

- A) Read the whole story
- B) Read between the lines
- C) Research on the internet
- D) Close your eyes and use imagination

3. A conclusion made by a reader is:

- A) Always correct
- B) The ending of a story
- C) A judgement, based on clues from a story
- D) Created by the author

**Activity of the Day**

Read the sentences below that were taken from three different stories. From the options provided, pick an inference you COULD make about each story. Remember, an inference is an assumption, or guess, you can make about a story based on some kind of evidence from it.



The tiger walked near the water. She could hear the wolves howling at the moon and the sound of cars on the highway.

The tiger is thirsty.

The story is set in a zoo.

It is nighttime.

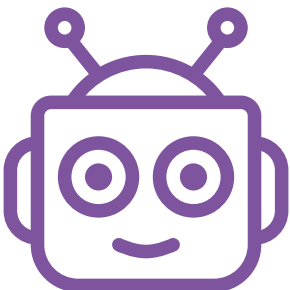
Sebastian approached the microphone. He had never sung in front of so many people. His hands shook slightly as he looked out into the darkness, searching for the faces of his parents.



Sebastian is nervous about singing.

Sebastian is an only child.

The story is set in a theater.



During the third year of the robot war, humans went into hiding underground in the deep caves of planet Mars.

The story is set in the future.

The story is science fiction.

This story is exciting.